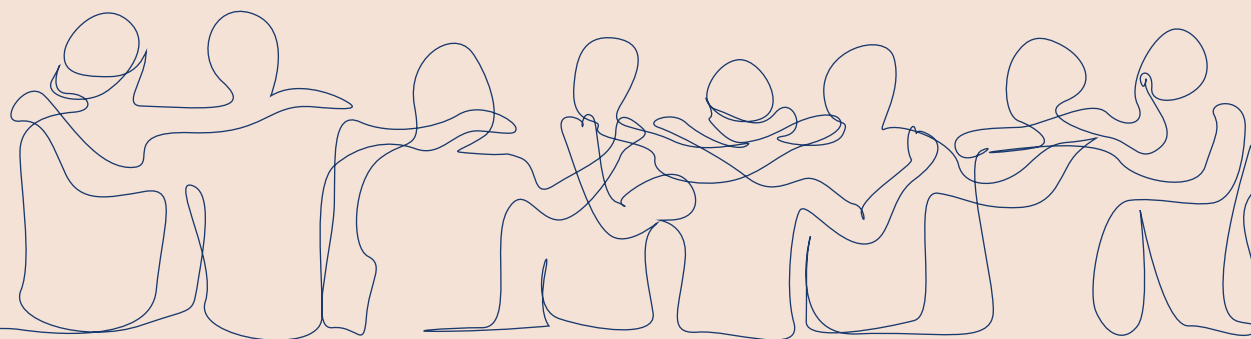




Navigating Cholestasis

YOUR BABY'S LIVER HEALTH

WHAT TO WATCH OUT FOR



Navigating Cholestasis

WHAT EARLY WARNING SIGNS OF LIVER DISEASE SHOULD YOU WATCH OUT FOR?

Liver conditions in newborns are rare, but **early diagnosis** is important for long-term health and wellbeing.^{1,2}

It is vital that **liver disease in newborn babies** is **identified and treated** as early as possible.^{1,2}

Be aware of the **2 key signs** to look for:¹⁻³

1

Pale, light-colored stools at any time

Healthy poo



Pale or chalky poo



In patients with liver disease, pale stools are observed.¹ If your baby has poo that looks pale or chalky (like these examples) at any time, **please speak to a healthcare professional.**

2

Prolonged yellowing of the skin and whites of the eyes (jaundice)



Jaundice is very common in newborn babies and usually resolves without complication.^{1,2}



However, if the jaundice has not improved after approximately 2 weeks, this may raise concerns that your baby's liver is not working as well as it should, so please speak to your pediatrician.¹



If your baby shows either of these signs, it is very important to speak to a healthcare professional straight away.

Selected resources



American Liver Foundation: liverfoundation.org



Children's Liver Disease Foundation: childliverdisease.org



National Organization for Rare Diseases: rarediseases.org

For further support, please contact your doctor and patient organizations, some of which are listed above.

References:

1. Fawaz R, et al. J Pediatr Gastroenterol Nutr 2017; 64:154–168.
2. National Childbirth Trust. Liver disease in babies: the signs to look out for. Available at: <https://www.nct.org.uk/>. Accessed September 2024.
3. Children's Liver Disease Foundation. Yellow Alert. Available at: <https://childliverdisease.org/yellow-alert/>. Accessed September 2024.

This leaflet was developed by a working group of pediatric hepatologists and was sponsored by Ipsen. This is not medical advice. For questions related to the health of you or any of your loved ones, please contact your healthcare provider. ALLSC-US-001526 | October 2024